

## Brief for Key Stage 2 Playground

To create a space that is both challenging and encouraging for the children, and to create an environment that also encourages social and imaginative play. To encourage more physical activity in the KS2 age group, especially amongst girls to achieve the 60 minutes activity set by the government guidelines.

The initial focus is on the tarmac playground which is used all year round. In subsequent years the aim is to enhance the facilities on the field.

### **Phase 1: Implement May 2013**

- |  |      |
|--|------|
| 1. Thermoplastic football (green) and netball (white) markings   | £325 |
| 2. Thermoplastic Activity Trail markings alongside gap between ball area and field and then in space between ball area and steps. To fit space comfortably available | £695 |
| 3. Three way shooter   | £895 |
| 4. 3 circle 1m, 1.5m, 2m Line Markings around Shooter  | £195 |

For Three Way Shooter circle line markings are to be incorporated as part of the Activity Trail, and use colours to make sure visually fits together.

<b>Total to spend May 2013</b>	<b>£2110</b>
--------------------------------	--------------

Total Allocated	£1500
Additional money left in PTFA account	£309
Additional money raised April/May	£196
Total money available now	<b>£2005</b>
<b>Additional money needed</b>	<b>£105</b>

## Phase 2: Implement July 2013

- |   |              |
|---|--------------|
| 1. Outdoor table tennis between seating area. Seating area to be moved to accommodate this. DELIVERED AND ASSEMBLED INC MOVING PLANTERS | £695.00      |
| 2. Paint/varnish to smarten up existing seating area and replace some of the games tops with table tops or planters.                    | £250.00      |
| Plus balance from phase 1   | £105         |
| <b>Total</b>  | <b>£1050</b> |

Projected funds to be raised in June/July 2013 from Father Day Craft, Sports Day Refreshments, 2 own Clothes Days and Summer Disco **£750**

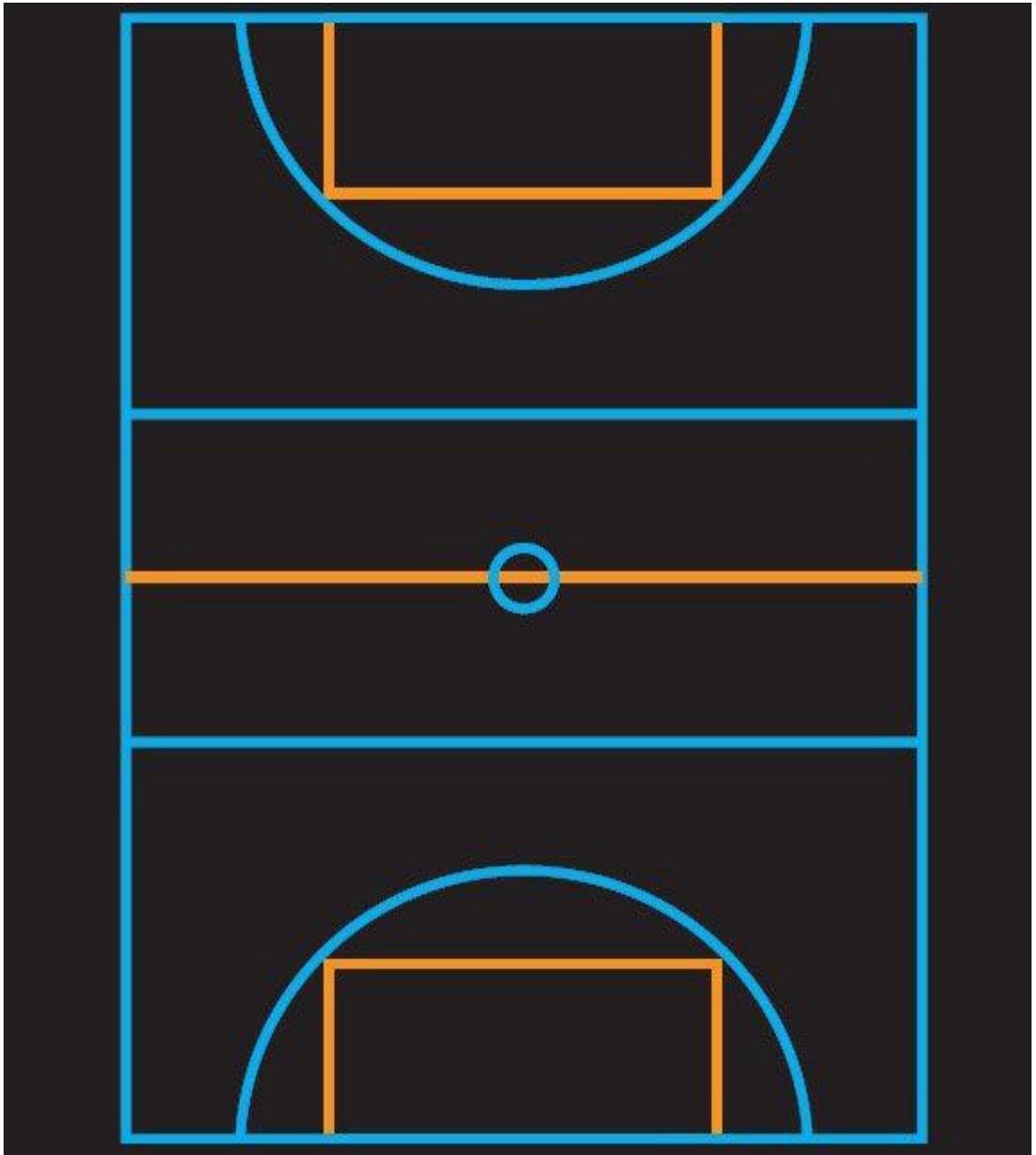
*Would the School be able to fund the balance to complete Phase 2, as part of this is maintenance of existing seating area?*

## Phase 3: 2013/2014

- |   |              |
|---|--------------|
| 1. A long bench to go on raised area in shade.  | £425.00      |
| 2. Solar stop clock board for Activity Trail and possibly time trials on the field. See picture below - it would be mounted on wooden posts and in School colours | £995.00      |
| <b>Total</b>  | <b>£1420</b> |

**Pictures of Markings/Equipment**

Football in green and netball in white



**Activity Trail** - assuming hop, lung, press up, squat and star jump are between field and ball area and yellow rings go along side ball area - please advice how you think it would fit in best.



Three way shooter - with markings?



Example of markings around 3 way shooter



Table Tennis - free standing with 10 year guarantee.



 **Table-Tennis-Tables.co.uk**

**Solar panel clock : Mounted on wooden post and in school colours**



Example of one from Creative Play for £1,450.



£1,450.00 Excluding VAT, Powered by the sun's rays, the digital display's visible from 40-meters away meaning playground athletes will be able to record themselves time and time again. It combines cutting-edge technology with traditional timber construction to make an eye-catching, long-lasting product. It's graffiti resistant, wipes clean and comes with a whiteboard for noting down personal-best performances. And because it's solar-powered you won't need to worry about changing batteries too often.